

Merge Healthcare  
900 Walnut Ridge Drive  
Hartland, WI 53029  
262.367.0700 phone  
262.367.0717 fax  
877.446.3743 toll-free

### Airport Info

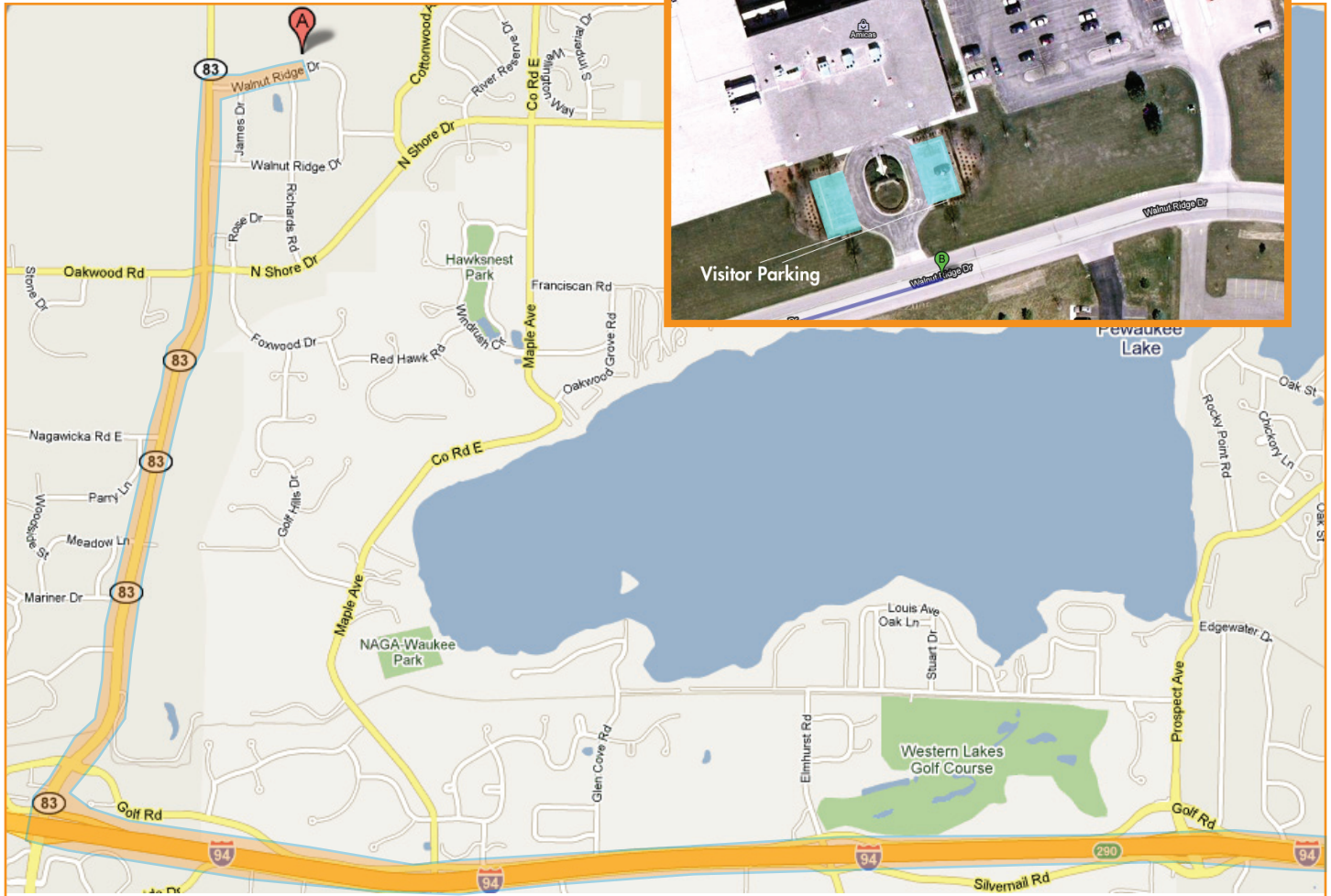
General Mitchell International Airport (MKE) located in Milwaukee, WI

### Vehicle Info

- Due to the distance between the Airport and Office, a rental car is the preferred method of transportation.
- Airport Towncar Express is our **preferred** delivery service. To make arrangements, please contact DeJay Durant @ 262.912.3431
- Merge Healthcare **allows the use** of taxicab services (approximate \$65 each way)

### Lodging Info

- The Delafield Hotel  
415 Genesee Street, Delafield, WI 53018 | Phone: 262.646.1600.  
Merge preferred rate is \$139.00 / night.  
Website: [www.thedelafieldhotel.com](http://www.thedelafieldhotel.com)
- Holiday Inn Express Hotel & Suites  
3030 Golf Road, Delafield, WI 53018 | Phone: 262.646.7077.  
Merge preferred rate is \$69 - \$79 / night.  
Website: [www.holidayinn.com/hotels/us/en/DLFWI/hoteldetail?](http://www.holidayinn.com/hotels/us/en/DLFWI/hoteldetail?)
- Sheraton Milwaukee  
375 South Moorland Road, Brookfield, WI | Phone 262.364.1100.  
Merge preferred rate is \$105 - \$125 / night.  
Website: [www.Sheraton.com/Milwaukee](http://www.Sheraton.com/Milwaukee)
- Country Inn and Suites - Milwaukee West  
1250 South Moorland Road, Brookfield, WI | Phone 262.782.1400.  
Merge preferred rate is \$94 - \$124 / night.  
Website: [www.countryinns.com/brookfieldwi](http://www.countryinns.com/brookfieldwi)



- Merge onto I-94 W via the ramp to I-894 W/Milwaukee
- Take exit 316 on the left to merge onto I-43 S/I-894 W toward Madison/Fond Du Lac
- Continue to follow I-894 W
- Take exit 1B on the left to merge onto I-94 W toward Madison
- Take exit 287 for WI-83 toward Hartland/Wales
- Turn right at WI-83 N
- Proceed north Walnut Ridge Drive - the second entrance, not first.
- Turn left to Parking Lot on left (Visitor or Employee Lot)