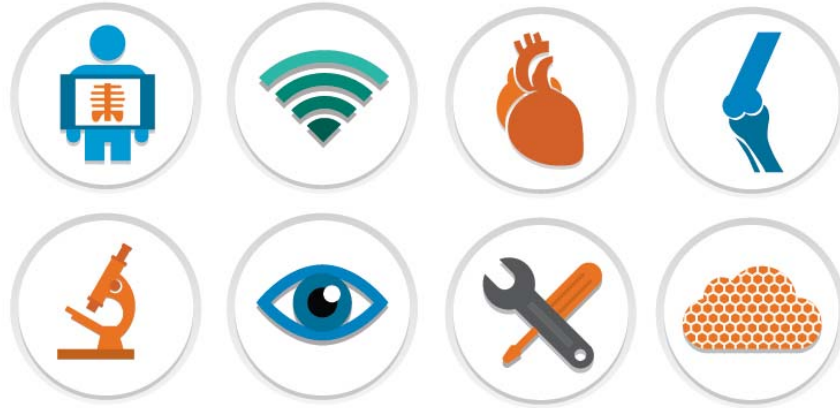


innovative imaging™



iConnect® Enterprise Archive  
v. 11.0

**IHE INTEGRATION STATEMENT**

Merge Healthcare  
900 Walnut Ridge Drive  
Hartland, WI 53029  
USA

**MERGE**

877.44.MERGE • [merge.com](http://merge.com)

 [@MergeHealthcare](https://twitter.com/MergeHealthcare)

 [linkedin.com/company/merge-healthcare](https://linkedin.com/company/merge-healthcare)

 [facebook.com/MergeHealthcare](https://facebook.com/MergeHealthcare)

© 2015 Merge Healthcare. The information contained herein is confidential and is the sole property of Merge Healthcare. None of the information may be reproduced, copied, and/or re-distributed electronically, manually, or otherwise to any person without advance written permission from Merge Healthcare, except as may be expressly authorized by contracts or other agreements between Merge Healthcare and its customer. Merge Healthcare® and AMICAS are registered trademarks and VERICIS, RadSuite, Abraxas, and iConnect are also trademarks of Merge Healthcare. Other trademarks or service marks referred to herein are the property of their respective owners.

For application support or to report issues with user documentation, contact Customer Support:

- In North America: call toll-free 1-877-741-5369
- Outside of North America: +31.40.299.0773
- Email: support@merge.com

Canadian Device 40020

**Australian Sponsor  
(Regulatory Affairs Only)**  
Emergo Asia-Pacific Pty Ltd.  
Darling Park, Tower II, Level 20  
Sydney, NSW 2000 Australia

**Telephone numbers**

Telephone: +61 (0) 2.9006.1662  
Fax: +61 (0) 2.9006.1010



EMERGO EUROPE  
Molenstraat 15  
2513 BH, The Hague  
The Netherlands  
Tel: +31 (0)70 345 8570  
Fax: +31 (0)70 346 7299

Doc #	Revision	Date	Description
ECM-6981	2.0	8/28/15	Removed "for Imaging" from XDS.b line.

<b>IHE Integration Statement</b>		<b>Date</b>
		2015
<b>Vendor</b>	<b>Product Name</b>	<b>Version</b>
Merge Healthcare	iConnect® Enterprise Archive	11.0
This product is intended to implement all transactions required in the IHE Technical Framework to support the IHE Integration Profiles, Actors and Options listed below:		
<b>Integration Profiles Implemented</b>	<b>Actors Implemented</b>	<b>Options Implemented</b>
<b>Scheduled Workflow</b>	Image Manager / Image Archive	None
	Performed Procedure Step Manager	None
<b>Patient Information Reconciliation</b>	Image Manager / Image Archive	None
	Performed Procedure Step Manager	None
<b>Consistent Presentation of Images</b>	Image Manager / Image Archive	None
<b>Presentation of Grouped Procedures</b>	Image Manager / Image Archive	None
	Performed Procedure Step Manager	None
<b>Evidence Documents</b>	Image Manager / Image Archive	None
<b>Key Image Note</b>	Image Manager / Image Archive	None
<b>Simple Image and Numeric Report</b>	Report Repository	None
	Enterprise Report Repository	None
	External Report Repository Access	None
<b>Access to Radiology Information</b>	Image Manager / Image Archive	None
	Report Repository	None
	External Report Repository Access	None
<b>Nuclear Medicine</b>	Image Manager / Image Archive	None
<b>Cardiac Catheterization Workflow</b>	Image Manager / Image Archive	Intermittently Connected Modality Cardiac Cath
	Performed Procedure Step Manager	None

<b>Echo Workflow</b>	Image Manager / Image Archive	Echocardiography Intermittently Connected Modality
	Performed Procedure Step Manager	None
<b>Evidence Documents - Cardiology</b>	Image Manager / Image Archive	None
<b>Consistent Time (CT)</b>	Time Client	None
<b>Mammography</b>	Image Manager / Image Archive	None
<b>Stress Testing Workflow</b>	Image Manager / Image Archive	None
	Performed Procedure Step Manager	None
<b>Cross-Enterprise Document Sharing for Imaging (XDS-I.b)</b>	Image Document Source	Set of DICOM Instances
	Document Repository	None
<b>Cross-Enterprise Document Sharing (XDS.b)</b>	Document Repository	None
	Integrated Document Source/ Repository	Document Replace
<b>Audit Trail and Node Authentication (ATNA)</b>	Secure Application	None
<b>Patient Identifier Cross- reference (PIX)</b>	Patient Identifier Cross-reference Consumer	None
<b>Patient Demographics Query (PDQ)</b>	Patient Demographics Consumer	None
<b>Internet address for vendor's IHE information:</b>	<a href="http://www.merge.com/Support/Resources/IHE-Statements.aspx">www.merge.com/Support/Resources/IHE-Statements.aspx</a>	
<b>Links to Standards Conformance Statements for the Implementation</b>		
<b>HL7</b>	<a href="http://www.merge.com/Support/Resources/HL7-Specs-and-Statements.aspx">www.merge.com/Support/Resources/HL7-Specs-and-Statements.aspx</a>	
<b>DICOM</b>	<a href="http://www.merge.com/Support/Resources/DICOM-Conformance-Statements.aspx">www.merge.com/Support/Resources/DICOM-Conformance-Statements.aspx</a>	
<b>Links to general information on IHE</b>		
In North America: <a href="http://www.ihe.net">http://www.ihe.net</a>	In Europe: <a href="http://www.ihe-europe.net">http://www.ihe-europe.net</a>	In Japan: <a href="http://www.ihe-j.org">http://www.ihe-j.org</a>